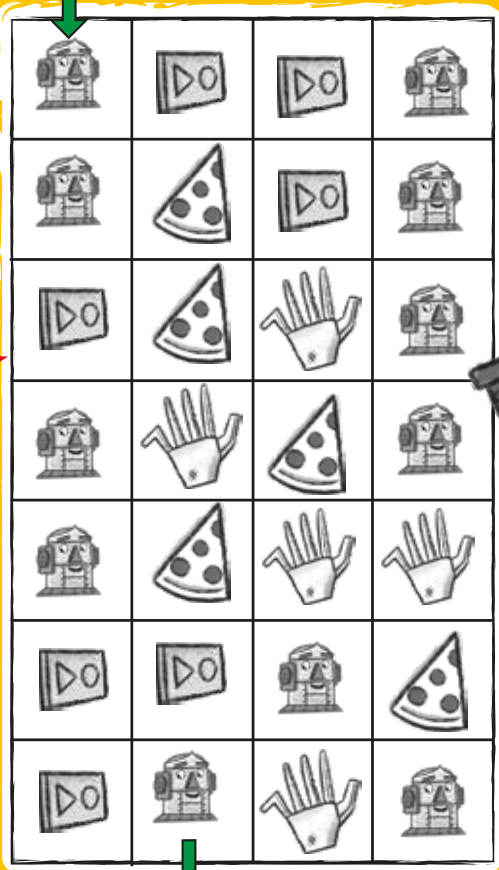


New!
Out Now

Alfie is off school after an accident in which he lost both his hand and his confidence. He's lonely all day on his own. So when he comes across Eric, a one-legged robot in need of a friend, he brings him home with him.

But a ban on humanoid robots has just been passed, which means Alfie is breaking the law by sheltering Eric.

Can he keep his new friend safe - and himself out of trouble?



SYMBOL MAZE

Using the symbols below, can you work out the route through the maze? Start at the top arrow and find your way to the bottom!



C	S	D	A	T	O	P	S	F	D
Q	F	H	V	O	M	Y	O	R	R
A	R	U	U	C	A	Y	S	I	C
I	B	M	H	W	I	H	P	E	F
R	X	A	A	S	I	R	R	N	A
P	R	N	L	L	P	J	E	D	U
O	U	O	L	B	F	V	Y	L	C
R	Y	I	B	O	M	I	Y	X	W
T	N	D	A	O	D	I	E	Z	A
G	P	J	O	U	T	B	L	A	U

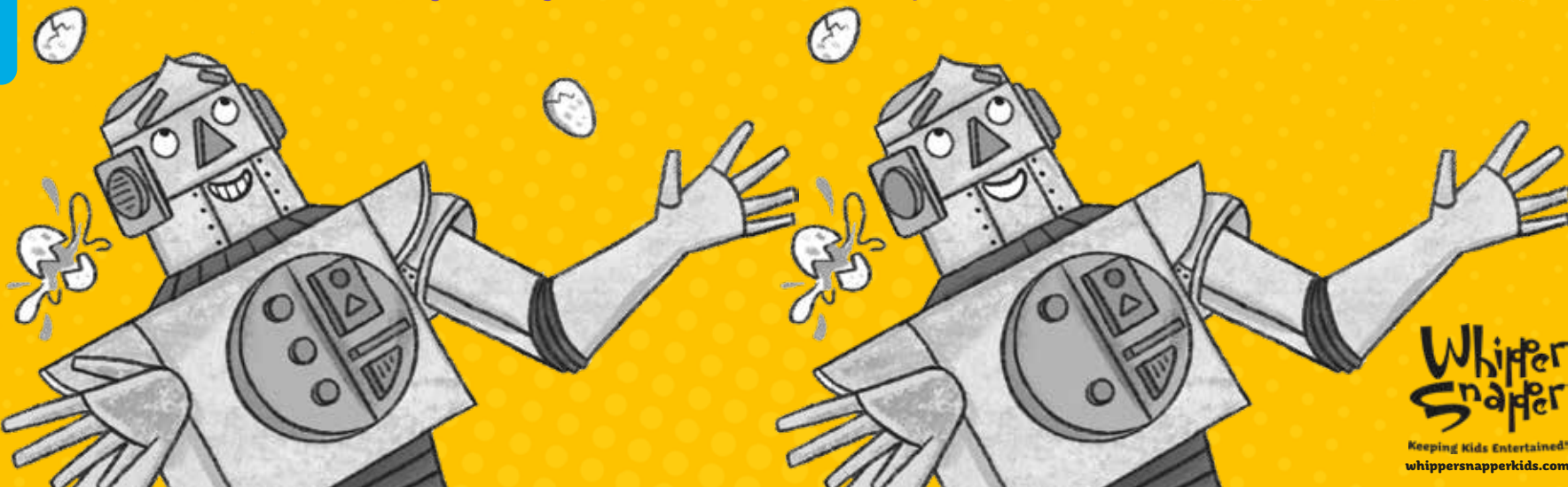
WORDSEARCH

Can you find these 10 words in the wordsearch above? They might be in reverse!

- | | |
|----------|-------------|
| Alfie | Friend |
| Eric | Limb Lab |
| Robot | Dr Shilling |
| Runaway | Osprey |
| Humanoid | Airport |

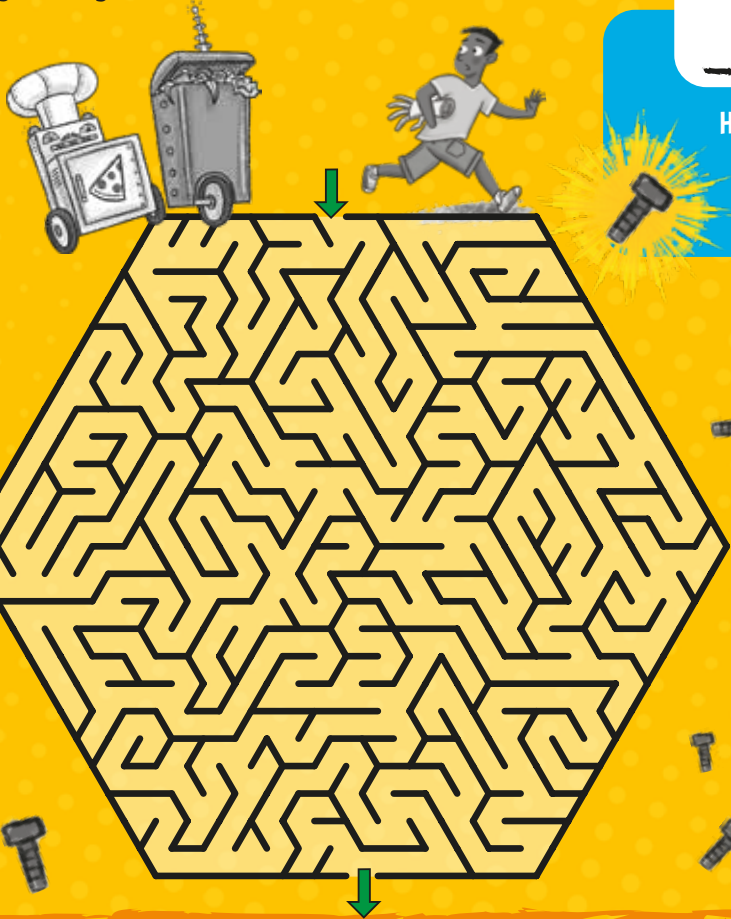
SPOT THE DIFFERENCE

Can you find eight differences between these two pictures of Eric?



DESTINATION: ADVENTURE
A world of possibilities

Can you help Alfie find his way through the maze and get away from the out-of-control domestic robots?



How many bolts like this one can you find on both sides of this sheet? (NOT including the example)



ROBOT REPAIR

Using the clues below, can you work out the steps needed to repair Eric?

HINT: Read all the clues before adding anything to the list!

1. The first step is to run **DIAGNOSTICS**
2. The **SAFETY CHECK** should be done two steps after you've **LOCATED** the problem
3. **DIAGNOSTICS** should be done two steps before the **REPAIR**
4. Once you've done the **SAFETY CHECK**, the next step is to **SWITCH ON**.

Step 1.

Step 2.

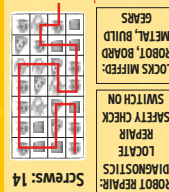
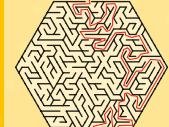
Step 3.

Step 4.

Step 5.



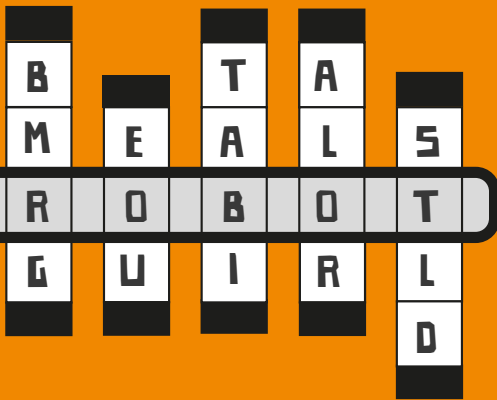
Answers



SCREWS: 14
DIAGNOSTICS
LOCATE
REPAIR
SAFETY CHECK
SWITCH ON
LOCKS MIFFED:
ROBOT, BOARD
METAL, BUILD
GEARS

LOCKS MIFFED

Move the lock dials up and down to create answers to the clues below (The first has been done for you)



1. Metal humanoid

Robot

2. Complete these words; circuit _____, mother _____, chip _____

3. What most robots are made of

4. To construct with materials

5. Mainly used in clockwork

WIN

1 of 5

DESTINATION: ADVENTURE

Book Bundles

plus robot toys from brainstorm



Whippersnapperkids.com/Robot

Competition closes 30.08.19. Terms and conditions apply see website for more.