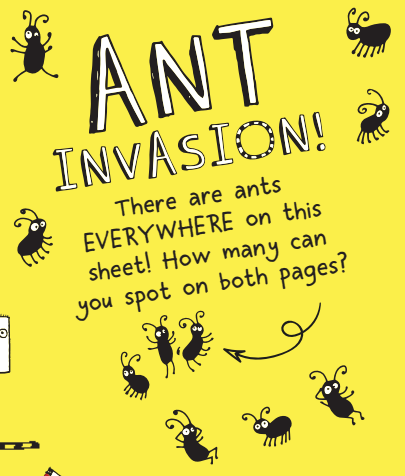




# ANT INVASION!

There are ants EVERYWHERE on this sheet! How many can you spot on both pages?



# WORD SEARCH

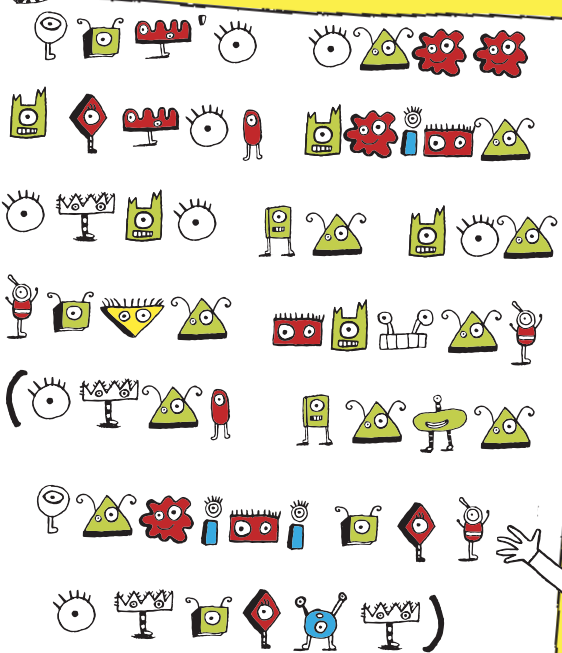
Can you spot all of the dog names in the word search?

S	D	V	E	U	T	T	J	I	R
E	A	Y	G	B	H	N	R	D	E
R	I	P	U	E	N	L	I	L	X
F	S	P	O	B	K	W	B	L	Q
T	Y	O	N	I	P	P	E	R	F
F	A	P	A	T	A	L	L	E	B
I	F	L	J	D	C	K	S	A	P
D	L	E	D	S	G	O	E	D	I
O	T	U	P	E	L	I	C	T	E
R	B	T	U	M	A	X	H	O	S

FIDO  
REX  
DAISY  
POPPY  
NIPPER  
BELLA  
COCO  
MAX

# MONSTER ALIEN SECRET MESSAGE

Using this code can you work out Tom's monster alien secret message?



# WORD JUMBLE

Tom certainly looks happy about something. Can you unscramble the letters to find out what?

ONEOM  
WOHRK  
□ □ □ □ □ □ □ □



Something to **KEEP OUT** incredibly **ANNOYING OLDER SISTERS** (or **BROTHERS**) (or **FAMILY**!)

# KEEP OUT!

Finish the doodle, **CUT** around the edge and hang on the handle of your door. Get an adult to help.



